

9 INCH QUAD WATERPROOF AHD MONITOR

SM-90SFWP (2CH) SM-90QFWP (4CH)



Features

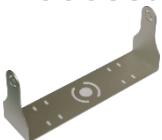
- Split, Triple, quad view
- Input upto **1280X720P**
- 9" AHD Monitor
- **IP68** waterproof rate
- Auto Detect **AHD** or **CVBS**
- Touch button (5 key)
- Anti Dust
- Compatible Radar Sensor (CAN, upto 4EA)

Application

- Mining vehicle
- Construction vehicle
- Agriculture vehicle
- Forklift

Model	Specification
Operating Voltage	10~32V DC
Current Consumption	1.4 AMax
Operating Temp	-30~+75
Panel Size	9.0" Digital
TV System	AHD 720P, CVBS (NTSC,PAL)
Resolution	800(H) x 480 (V)x RGB
Contrast Ratio	500:1
Brightness	450 cd/m ²
Weight	Approx. 900g
Number of Video Inputs	1 ~ 4 Camera
Number of Trigger Input	1 ~ 3 Trigger
Speaker	8Ω / 1Watt
Viewing Angle	Top: 50°, Bottom, Left, Right : 70
Casing Material	Aluminum
Dimension	240mm(W) x 140mm(H) x 20mm(D)
IP Protection rate	IP 68

Accessory



U type
bracket

(optional)



Vesa type
bracket